

**Exchange of the Electronic unit for VT 157 E – Only for electrician.**  
**Umbau von den Elektronische Platine, VT 157 E – Nur für Installateur**



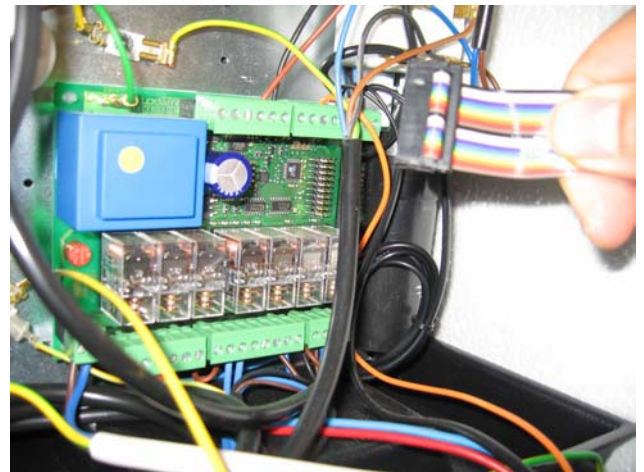
001 Pull plug away  
001 Stecker wegziehen



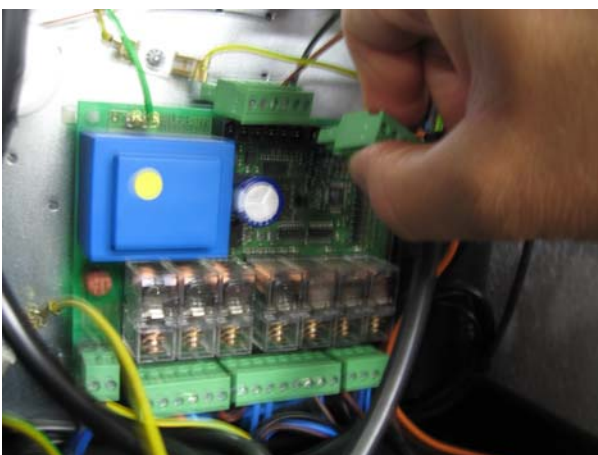
002 Unscrew the 2 fittings at the top plate.  
002 Beschlag oben abschrauben 2 Stck.



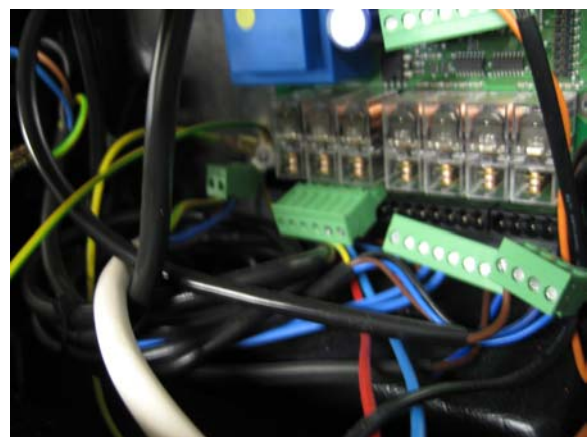
004 Remove the door. Remove the 2 screws.  
004 Tür Entfernen. 2 schrauben entfernen.



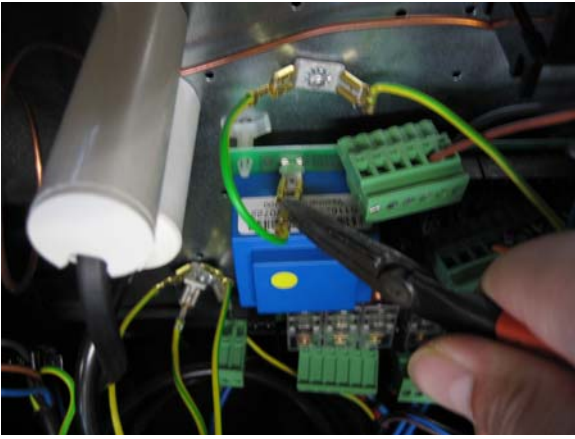
006-1 Remove the core for the Display.  
Remember the red colour is lower.  
006-1 Leitung für Display entfernen



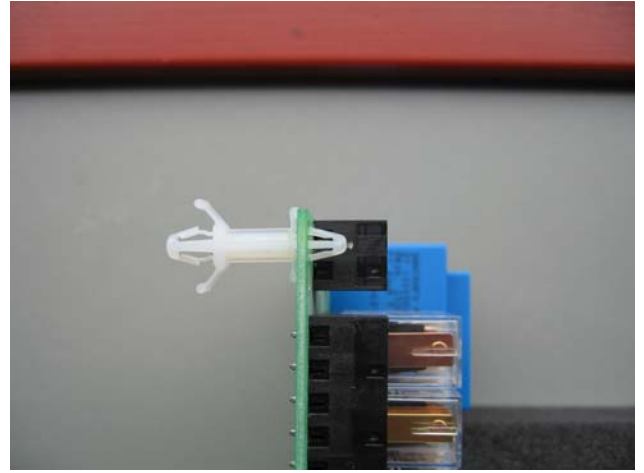
007 Remove the plugs. (It is not possible to mount the plugs wrong later).  
007 Stecker entfernen. (Es ist nicht möglich die falsch wieder montieren)



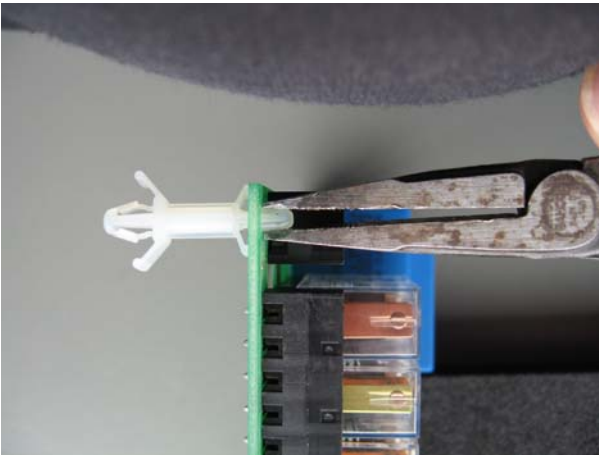
007-1 All plugs must be removed.  
007-1 Alle Stecker entfernen



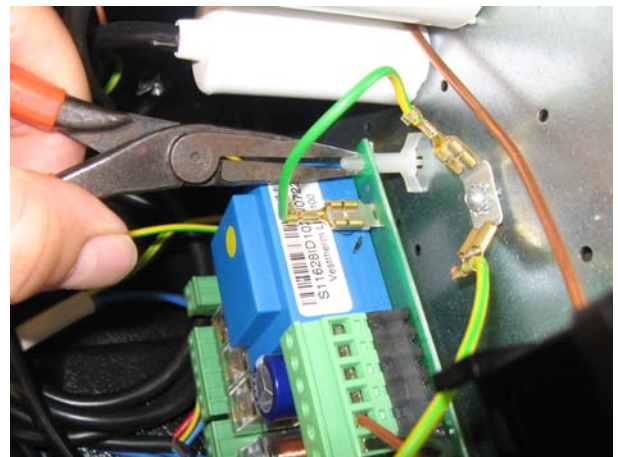
008 Remove the core for the ground.  
008 Erdleitung entfernen



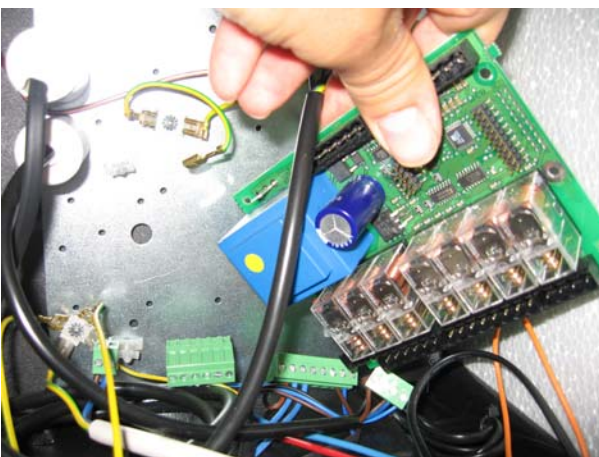
009-1 Spacer, PCB support on the unit.  
009-2 Montierungsbein



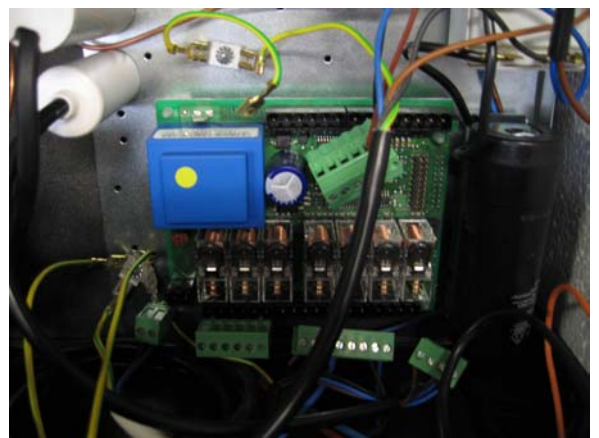
009-2 Squeeze the leg.  
009-2 Montierungsbein einklemmen.



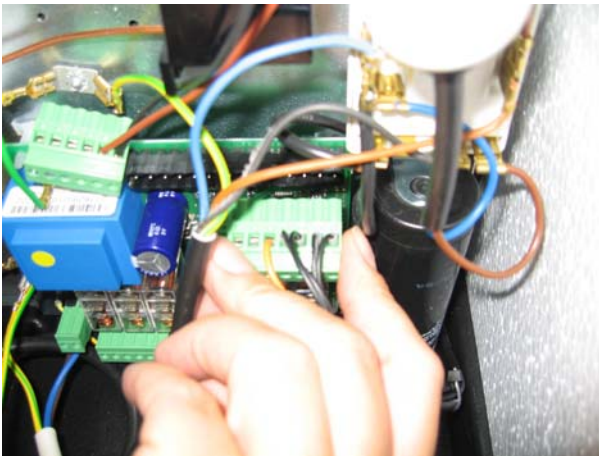
009-5 Remove all the 4 legs.  
009-5 Montierungsbein entfernen 4 Stck



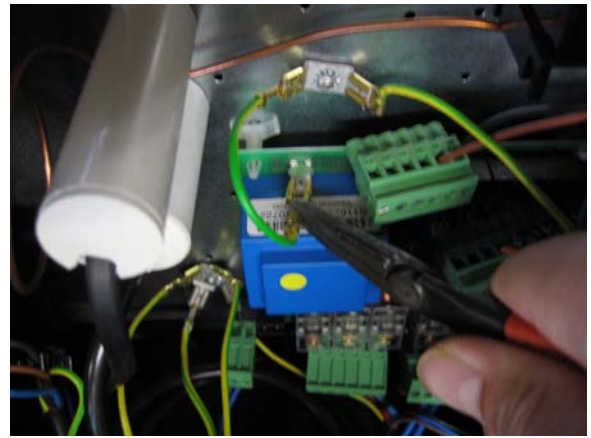
010-1 Remove the unit  
010-1 Platine entfernen



011 Replace the new unit.  
011 Neue Platine einsetzen



012-1 Put back the plugs. (it is not possible to mount the plugs wrong)  
 012-1 Klemmreihen einsetzen. Es ist nicht möglich die falsch zu verbinden.



013 Remount the ground wire.  
 013 Erdleitung montieren



015 Remount the door.  
 015 Fronttür montieren.



016 Mount the Display. Red colour below  
 016 Display montieren. Rote Farbe unten



017 Remount the fittings for the top plate.  
 017 Beschlag oben anschrauben.



018 Reconnect the plug.  
 Please be sure that all the functions for the heat Pump is correct.  
 Eventually adjustment must take place.  
 (Heating element / Boiler, air speed. Etc.)  
 018 Netstecker einsetzen.  
 Kontrollieren Sie dann die Funktionen der WP  
 Eventuell Einstellung ändern.  
 (Heizstab / Kessels, Luftgeschwindigkeit usw.)